

# VADGAZDÁLKODÁSI ADATTÁR

1960 — 2018/2019

Hungarian Game Management  
Database

1960 — 2018/2019

Készítették: Csányi Sándor, Márton Mihály, Köteles Petra,  
Lakatos Erzsébet Anna és Schally Gergely

Javasolt hivatkozás:

Csányi S., Márton M., Köteles P., Lakatos E.A. és Schally G. 2019. Vadgazdálkodási Adattár – 1960  
— 2018/2019. Országos Vadgazdálkodási Adattár, Gödöllő, 24pp.

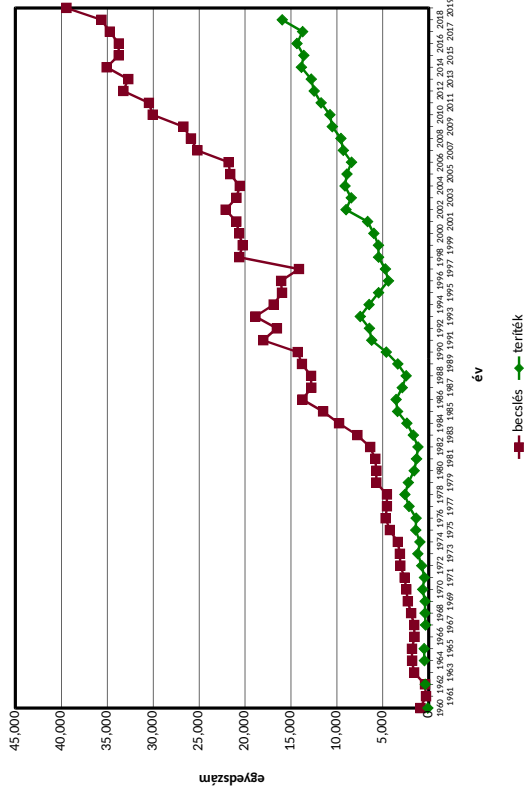
**Országos Vadgazdálkodási Adattár**  
SZIE, VadVilág Megőrzési Intézet,  
2103 Gödöllő, Páter Károly utca 1.  
[www.ova.info.hu](http://www.ova.info.hu)

Gödöllő  
2019

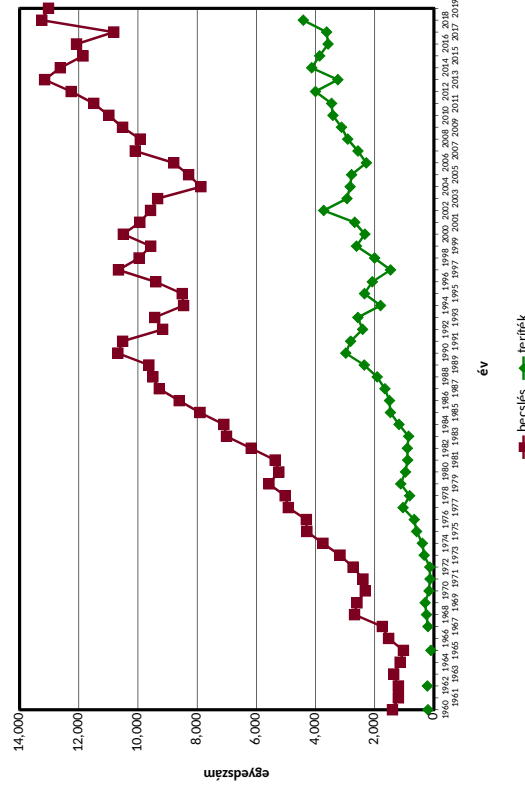




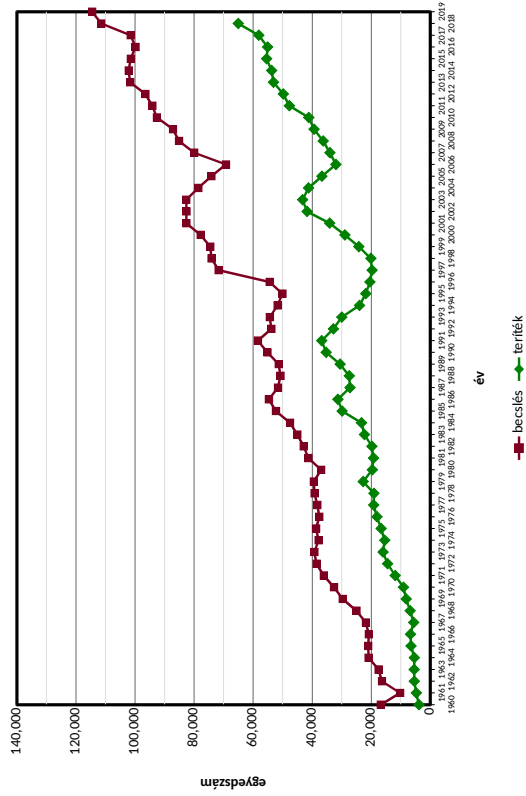
Dámszarvas



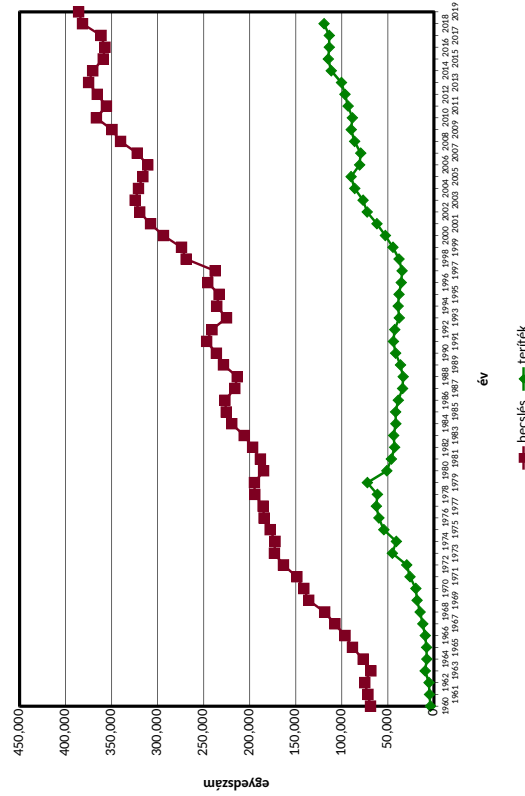
Muflon



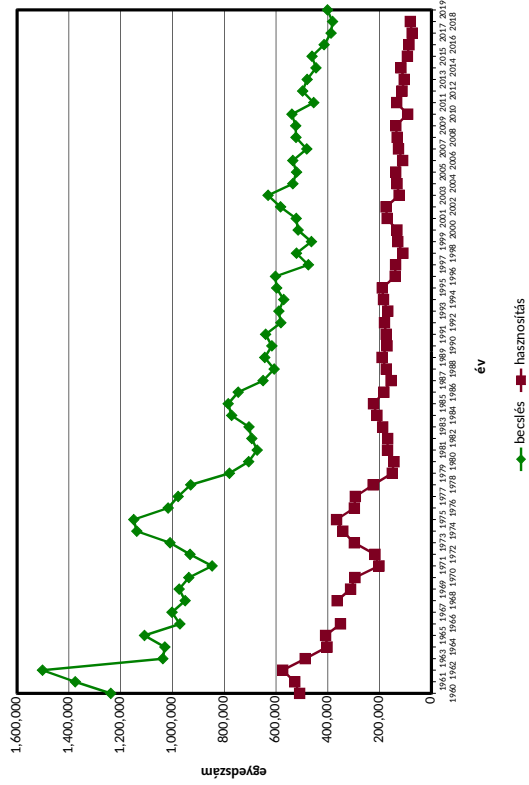
Gímszarvas



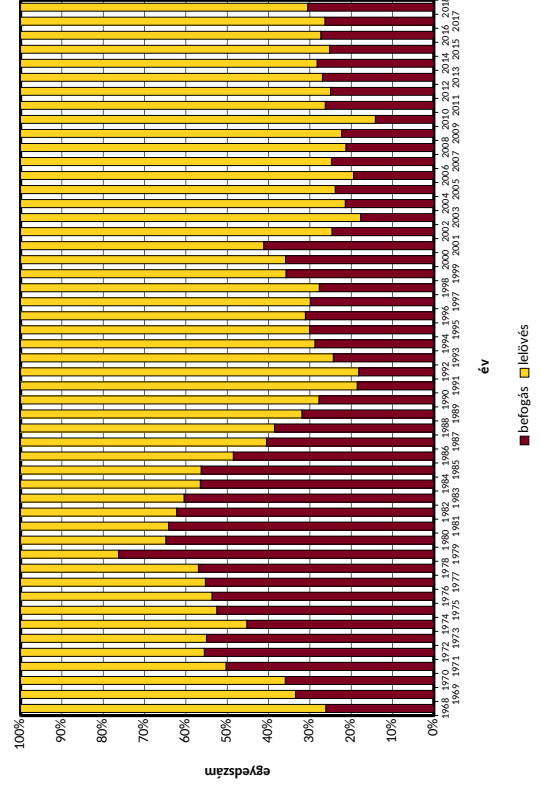
Őz



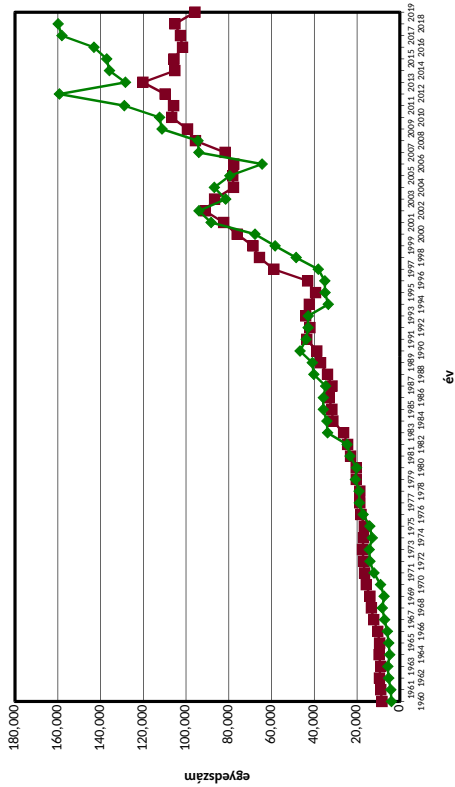
Mezeinyúl



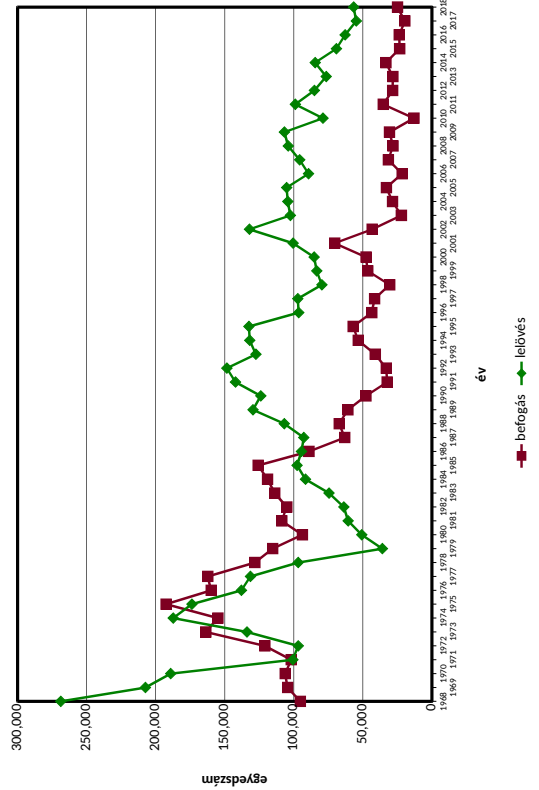
Mezeinyúl

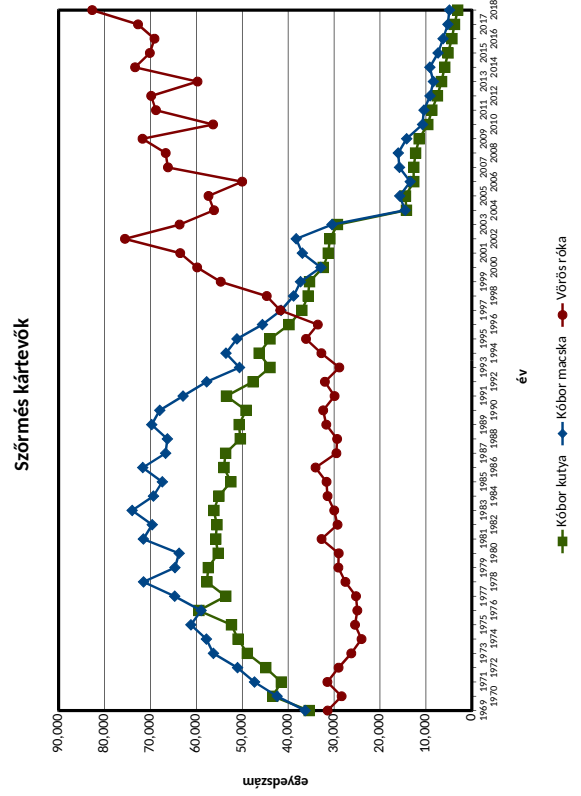
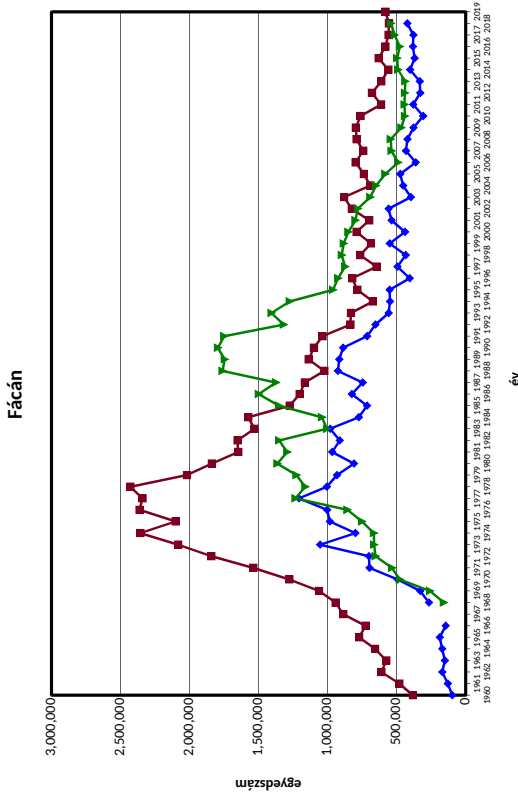
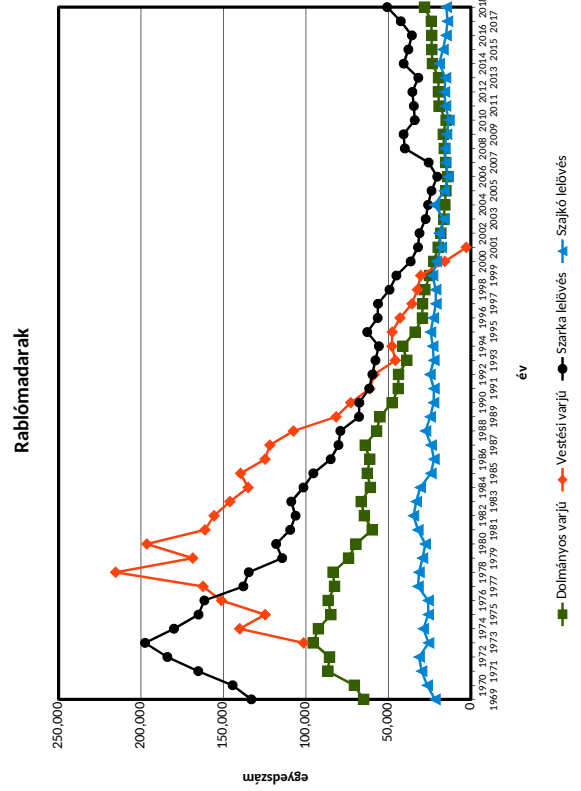
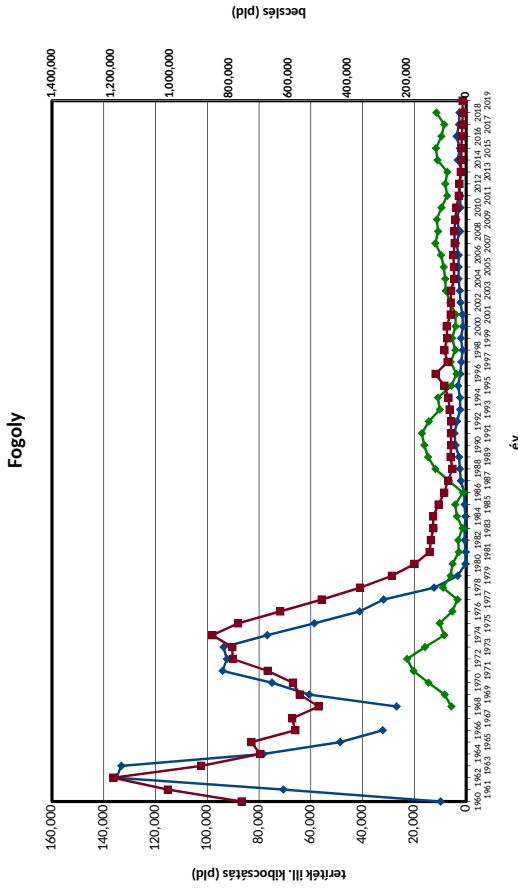


Vaddisznó

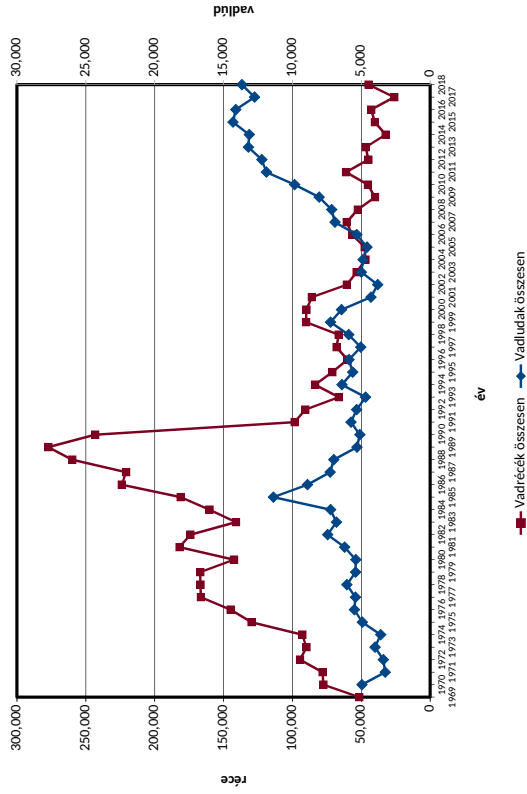


Mezeinyúl

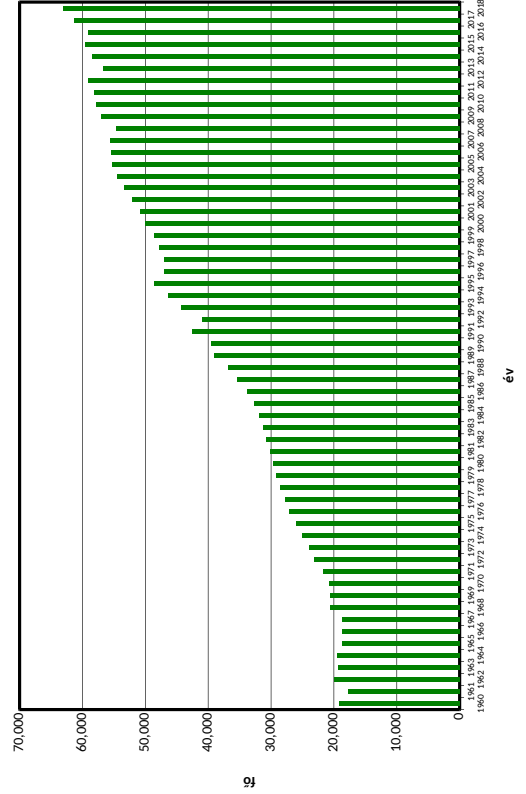




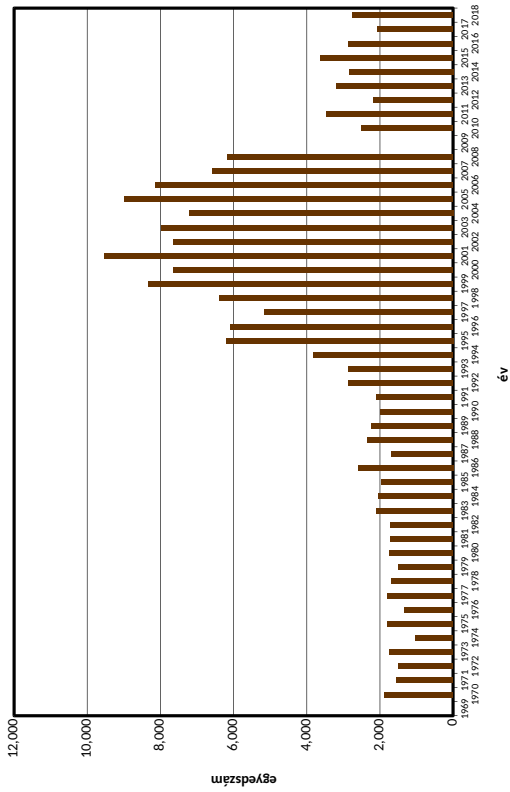
Vadrécék és vadludak összesen



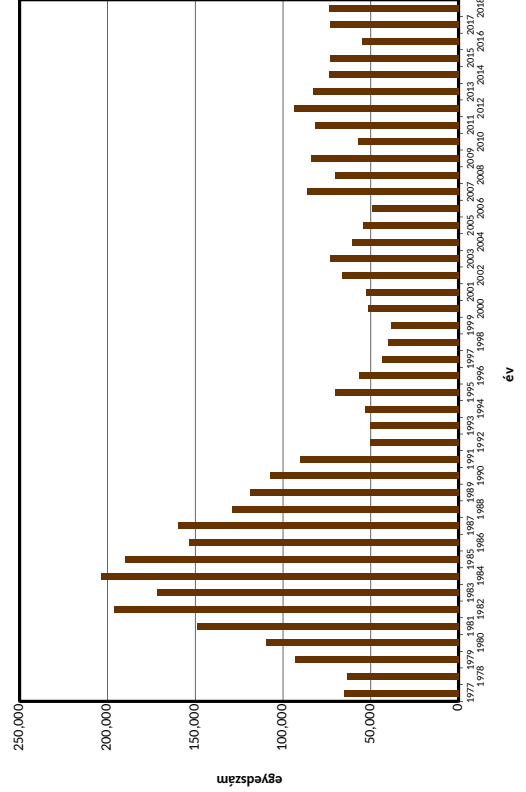
Vadászok létszáma



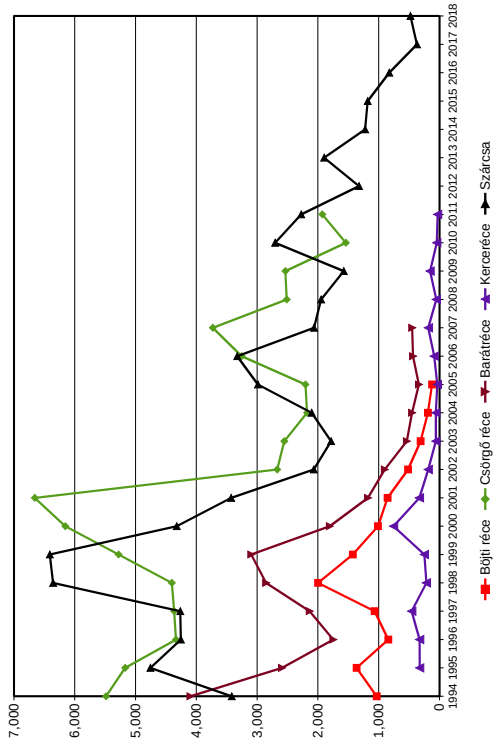
Erdei szalonka



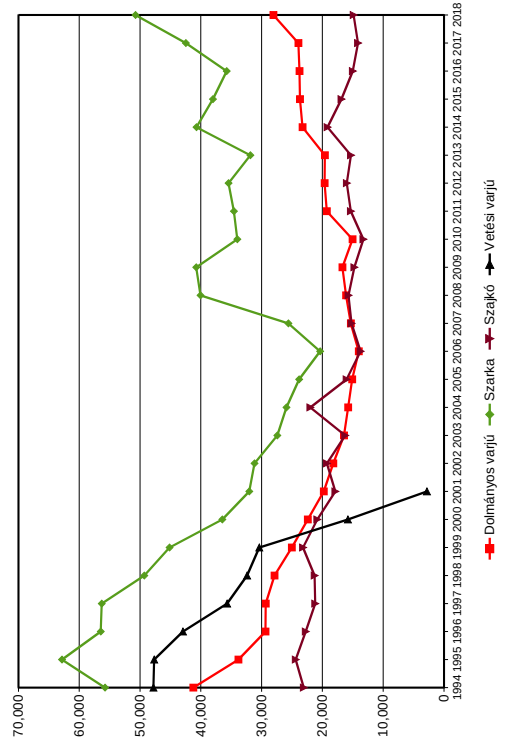
Vadgalambok



Récék és szárcsa szákmánya

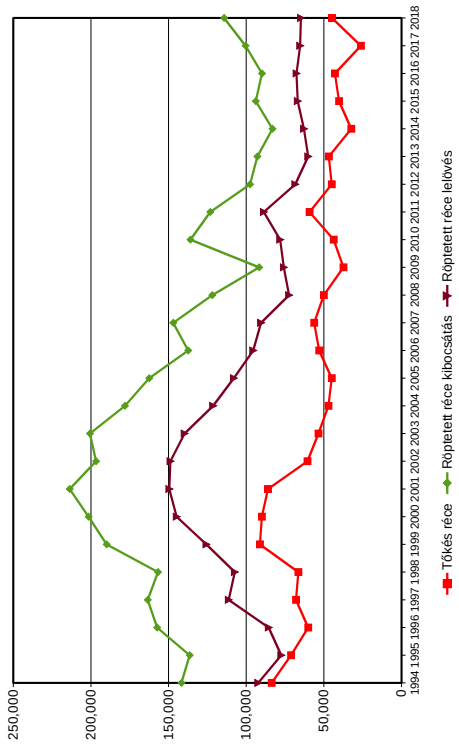


Rablómadarak szákmánya

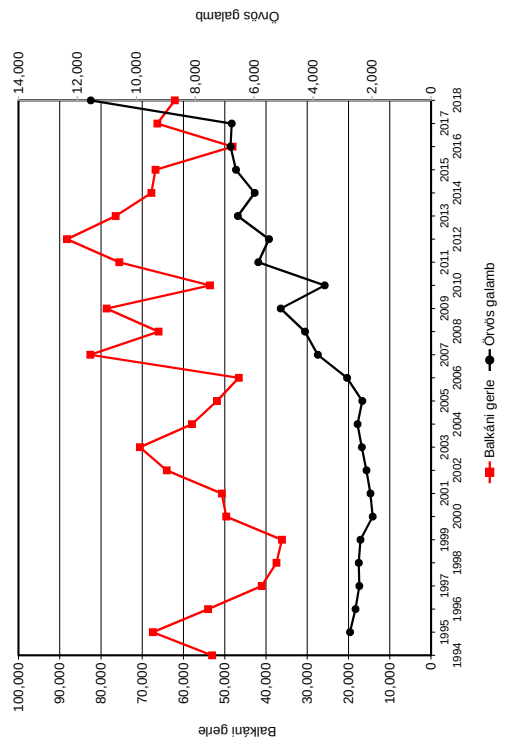


Tőkés réce szákmánya

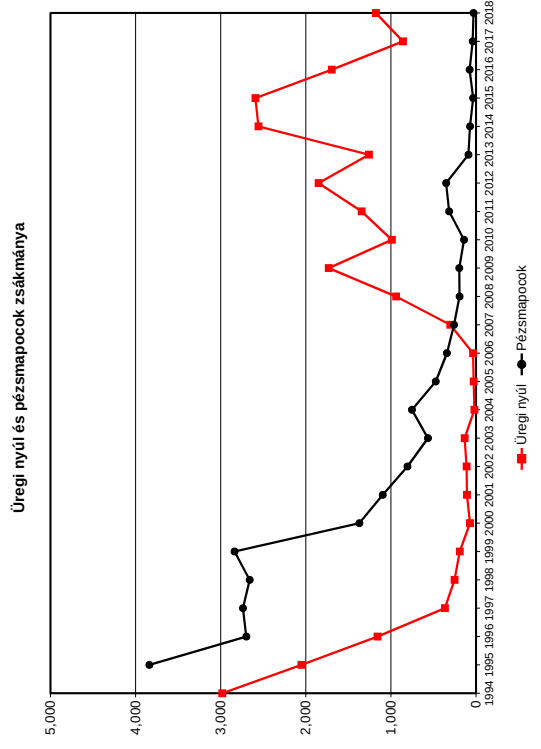
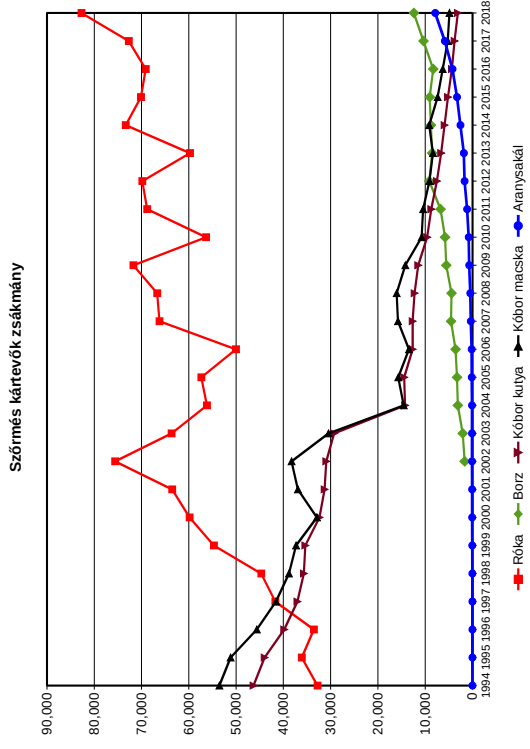
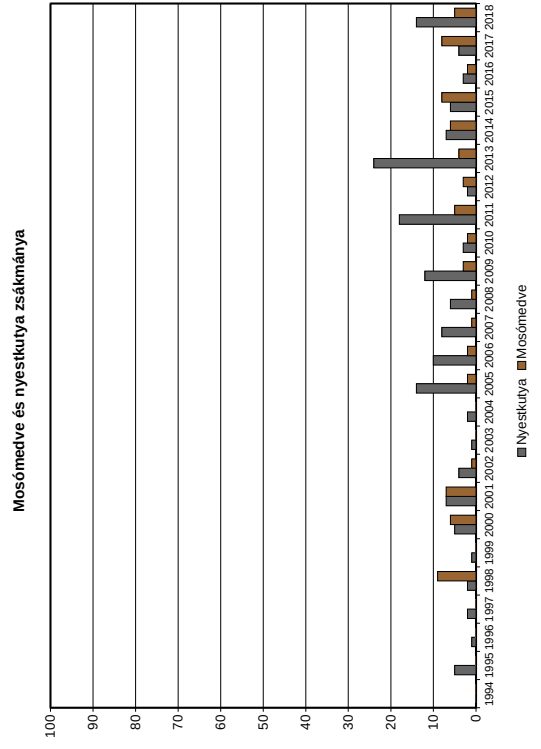
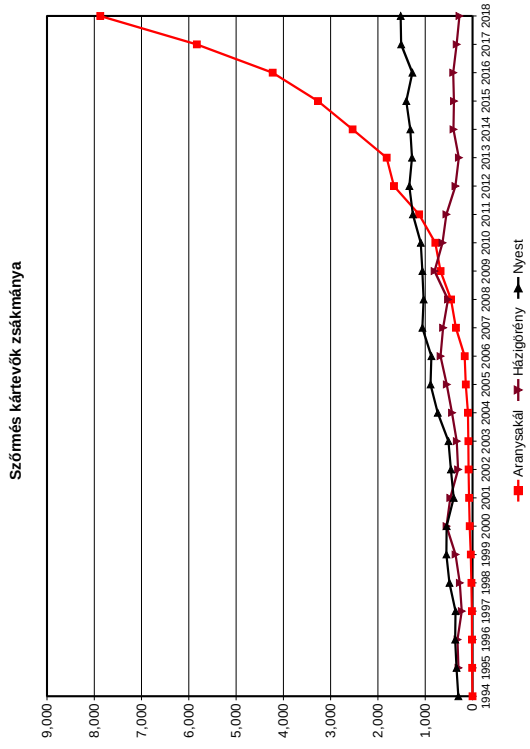
Szabad területi és kibocsátott



Vadászható galambok szákmánya







**A KÜLFÖLDI ÉS HAZAI VADÁSZOK ÁLTAL ELEJTETT TRÓFEÁK VAD MEGOSZLÁSA**

**1990–2018**

Vadfaj	1990	1991	1992	1993	1994	1995	1996	1997	1998	1999	2000	2001	2002	2003	2004	2005	2006	2007	2008	2009	2010	2011	2012	2013	2014	2015	2016	2017	2018	
Gím	db	4,930	5,055	5,480	4,942	4,953	4,354	3,874	3,416	4,040	4,267	5,025	4,951	5,188	5,210	4,266	5,120	4,323	4,446	4,316	4,407	4,484	4,911	4,896	5,027	4,827	5,036	4,869	5,005	5,179
	%	51.6%	55.2%	58.1%	65.3%	68.7%	70.0%	71.6%	67.6%	69.5%	63.9%	61.4%	56.9%	53.2%	50.8%	46.9%	52.7%	47.0%	45.3%	41.8%	41.3%	41.0%	40.7%	39.3%	39.3%	36.3%	36.4%	34.4%	33.5%	32.0%
Dám	db	580	816	804	745	872	869	578	551	608	645	671	743	690	633	699	677	674	770	807	836	895	898	915	987	1,004	1,019	990	978	
	%	62.2%	67.4%	71.3%	68.7%	70.3%	75.2%	70.4%	70.5%	58.7%	51.8%	49.5%	44.8%	42.0%	40.1%	36.3%	37.1%	40.2%	33.3%	35.7%	33.4%	32.8%	33.7%	30.4%	28.5%	28.1%	26.9%	25.9%	23.4%	
Öz	db	10,240	11,717	12,965	11,920	11,012	10,587	10,299	10,221	10,798	11,201	13,178	14,685	15,415	15,960	13,841	17,796	17,265	15,508	15,669	15,178	16,054	16,069	15,533	15,335	16,598	16,783	16,679	16,920	
	%	54.8%	60.0%	65.6%	67.8%	68.9%	67.6%	67.3%	73.1%	67.3%	65.1%	62.9%	62.7%	56.9%	54.1%	49.5%	53.6%	53.4%	50.5%	46.6%	43.1%	44.2%	43.2%	41.6%	38.7%	39.7%	40.1%	40.3%	38.5%	
Mufflon	db	738	777	678	657	526	563	374	339	380	458	395	355	440	423	390	402	272	251	251	266	311	363	271	352	387	382	345	317	
	%	75.5%	81.3%	79.5%	82.2%	82.6%	80.9%	76.5%	77.2%	77.6%	68.5%	65.9%	60.1%	51.3%	53.3%	47.0%	47.3%	44.6%	32.0%	28.2%	28.6%	34.6%	35.0%	34.4%	30.4%	35.1%	34.0%	29.4%	25.5%	
Vadkan	db	1,748	1,799	1,692	1,796	1,869	1,803	2,399	1,882	1,954	2,207	2,469	2,751	2,983	3,332	2,849	2,843	2,641	2,659	2,269	2,703	2,745	3,022	3,200	3,254	2,738	2,763	2,443	2,899	2,583
	%	60.2%	62.0%	59.0%	63.8%	70.2%	70.9%	81.7%	75.6%	71.0%	71.6%	65.1%	63.1%	64.5%	70.2%	68.4%	70.0%	71.6%	59.4%	54.6%	55.0%	55.9%	54.8%	51.3%	60.1%	56.5%	56.4%	54.3%	55.4%	49.1%
Összesen	db	18,236	20,164	21,619	20,060	19,232	18,176	17,524	16,368	17,723	18,741	21,712	23,413	24,769	25,615	21,979	26,860	25,178	23,538	23,275	23,361	23,390	25,193	25,426	25,000	24,239	25,788	25,496	25,918	25,977
	%	55.2%	59.7%	63.5%	67.2%	69.4%	69.2%	70.4%	72.1%	68.0%	65.1%	62.3%	60.7%	56.2%	54.5%	50.2%	54.0%	53.0%	49.2%	45.5%	43.2%	43.0%	43.9%	42.4%	41.9%	38.8%	39.6%	39.0%	38.9%	36.7%

Vadfaj	1960	1961	1962	1963	1964	1965	1966	1967	1968	1969	1970	1971	1972	1973	1974	1975	1976	1977	1978	1979	1980	1981	1982	1983	1984	1985	1986	1987	1988	1989	1990
Gím	db	4,622	4,096	3,958	2,625	2,255	1,866	1,539	1,638	1,775	2,406	3,161	3,753	4,573	5,055	4,831	4,596	4,880	5,368	6,019	6,273	6,454	7,143	7,573	7,756	8,473	8,796	9,293	9,955	11,016	
	%	48.4%	44.8%	41.9%	34.7%	31.3%	30.0%	28.4%	32.4%	30.5%	36.1%	38.6%	43.1%	46.8%	49.2%	53.1%	47.3%	53.0%	54.7%	58.2%	58.7%	59.0%	59.3%	60.7%	60.7%	63.7%	63.6%	65.6%	66.5%	68.0%	
Dám	db	353	395	323	340	369	287	243	213	388	565	659	827	1,024	1,031	1,109	1,185	1,007	1,349	1,389	1,608	1,714	1,762	2,054	2,300	2,526	2,763	2,835	3,197		
	%	37.8%	32.6%	28.7%	31.3%	29.7%	24.8%	29.6%	29.5%	41.3%	48.2%	50.5%	55.2%	58.0%	59.9%	63.7%	62.9%	59.8%	66.7%	64.3%	66.6%	67.2%	66.3%	69.6%	71.5%	71.9%	73.1%	74.1%	76.6%		
Öz	db	8,433	7,825	6,792	5,673	4,962	5,069	4,945	3,761	5,253	5,996	7,778	8,737	11,663	13,549	14,110	15,418	15,044	15,211	17,960	20,012	20,023	20,245	21,157	21,821	24,292	25,239	25,104	24,741	26,976	
	%	45.2%	40.0%	34.4%	32.2%	31.1%	32.4%	32.4%	26.9%	32.7%	34.9%	37.1%	37.3%	43.1%	45.9%	50.5%	46.4%	46.6%	49.5%	53.4%	56.9%	57.2%	55.8%	56.8%	58.4%	61.3%	60.3%	59.9%	59.7%	61.5%	
Mufflon	db	259	179	175	142	111	133	115	100	110	211	204	236	417	370	439	448	338	533	640	663	615	578	693	571	804	717	742	830	928	
	%	24.5%	18.7%	20.5%	17.8%	17.4%	19.1%	23.5%	22.8%	22.4%	31.5%	34.1%	39.9%	48.7%	46.7%	53.0%	52.7%	55.4%	68.0%	71.8%	71.4%	65.4%	65.0%	65.6%	67.8%	69.6%	64.9%	66.0%	70.6%	74.5%	
Vadkan	db	1,158	1,102	1,176	1,017	794	740	537	607	799	876	1,326	1,612	1,639	1,412	1,314	1,220	1,045	1,816	1,888	2,211	2,168	2,494	3,041	2,162	2,110	2,135	2,058	2,335	2,681	
	%	39.8%	38.0%	41.0%	36.2%	29.8%	29.1%	18.3%	24.4%	29.0%	28.4%	34.9%	36.9%	35.5%	29.8%	31.6%	30.0%	28.4%	40.6%	45.4%	45.0%	44.1%	45.2%	48.7%	39.9%	43.5%	43.6%	45.7%	44.6%	50.9%	
Összesen	db	14,805	13,597	12,424	9,797	8,491	8,095	7,379	6,319	8,325	10,054	13,128	15,165	19,316	21,417	21,803	22,867	22,314	24,277	27,896	30,767	30,974	32,222	34,518	34,610	38,205	39,403	39,960	44,798		
	%	44.8%	40.3%	36.5%	32.8%	30.6%	30.8%	29.6%	27.9%	32.0%	34.9%	37.7%	39.3%	43.8%	45.5%	49.8%	46.0%	47.0%	50.8%	54.5%	56.8%	57.0%	56.1%	57.6%	58.1%	61.2%	60.4%	61.0%	61.1%	63.3%	
<b>Mindösszesen</b>		<b>33,041</b>	<b>33,761</b>	<b>34,043</b>	<b>29,857</b>	<b>27,723</b>	<b>26,271</b>	<b>24,903</b>	<b>22,687</b>	<b>26,048</b>	<b>28,795</b>	<b>34,840</b>	<b>36,578</b>	<b>44,085</b>	<b>47,032</b>	<b>43,792</b>	<b>49,727</b>	<b>47,492</b>	<b>47,815</b>	<b>51,171</b>	<b>54,128</b>	<b>54,364</b>	<b>57,415</b>	<b>59,944</b>	<b>59,610</b>	<b>62,444</b>	<b>65,191</b>	<b>65,456</b>	<b>66,614</b>	<b>70,775</b>	

A TRÓFEABÍRÁLAT ORSZÁGOS ÖSSZESÍTETT ADATAI  
1970–2018

Év	Gímzarvas				Dámszarvas				Óz				Mufflon				Vadlisznc								
	Példány	Arany	Ezüst	Bronz	Érmes	Példány	Arany	Ezüst	Bronz	Érmes	Példány	Arany	Ezüst	Bronz	Érmes	Példány	Arany	Ezüst	Bronz	Érmes					
1970	2.697	117	417	584	41.5%	73	12	5	10	37.0%	6.093	116	183	249	9.0%	63	6	8	14	44.4%	284	9	20	13.4%	
1971	3.118	136	470	702	41.9%	98	17	5	11	33.7%	7.136	56	142	191	5.5%	38	1	4	6	28.9%	514	20	18	42	15.6%
1972	3.589	160	495	792	40.3%	122	21	21	17	48.4%	8.568	145	301	334	9.1%	40	3	3	8	27.5%	440	11	7	25	9.8%
1973	4.039	185	553	866	39.7%	119	31	13	18	52.1%	11.003	122	259	327	6.4%	76	5	12	13	39.5%	321	4	10	17	9.7%
1974	4.324	195	544	841	36.5%	151	39	20	22	53.6%	12.562	183	382	499	8.5%	82	3	13	13	35.4%	423	8	13	27	11.3%
1975	4.634	203	601	936	37.5%	210	42	9	50	48.1%	14.929	284	450	606	9.0%	134	9	18	19	34.3%	216	7	12	15	15.7%
1976	5.506	278	685	958	34.9%	228	14	13	38	28.5%	19.262	222	518	694	7.4%	245	12	19	41	29.4%	503	8	18	24	9.9%
1977	5.534	286	788	1.049	38.4%	296	44	19	52	38.9%	19.950	274	475	673	5.4%	229	7	24	42	31.9%	1.103	24	32	89	13.1%
1978	5.822	257	770	1.062	35.9%	577	61	35	90	32.9%	19.659	155	389	523	5.4%	310	20	19	45	27.1%	673	8	17	38	9.4%
1979	7.088	267	766	1.245	32.1%	701	74	45	99	31.1%	22.778	175	420	562	5.1%	402	20	26	66	27.9%	844	13	22	58	11.0%
1980	6.187	281	749	1.044	33.5%	621	59	53	111	35.9%	19.765	194	385	625	6.1%	360	22	43	62	35.3%	878	16	32	67	13.1%
1981	6.195	238	699	1.105	33.0%	385	39	28	71	35.8%	18.699	295	668	851	9.7%	359	17	32	60	30.4%	1.028	15	35	84	13.0%
1982	5.826	273	752	1.052	35.7%	379	30	40	57	33.5%	17.642	171	480	703	7.7%	272	12	30	53	34.9%	692	16	26	59	14.6%
1983	6.941	238	786	1.293	33.4%	436	50	30	85	37.8%	17.747	214	442	691	7.6%	363	20	49	71	38.6%	1.064	14	21	80	10.8%
1984	6.802	243	811	1.214	33.3%	507	38	43	99	35.5%	18.870	168	431	697	6.9%	450	11	36	91	30.7%	1.362	56	73	149	20.4%
1985	7.642	253	839	1.319	31.5%	596	60	93	115	45.0%	18.894	148	396	629	6.2%	495	27	61	68	31.5%	1.386	37	77	156	19.5%
1986	7.869	213	844	1.379	31.0%	723	49	79	135	36.4%	18.138	87	250	454	4.4%	483	23	64	84	35.4%	1.340	42	80	154	20.6%
1987	7.660	262	867	1.366	32.6%	671	76	93	115	42.3%	17.828	73	200	394	3.7%	521	22	38	102	31.1%	1.331	29	62	142	17.5%
1988	8.126	301	1.023	1.501	34.8%	793	115	121	133	46.5%	16.784	137	307	588	6.1%	657	25	58	125	31.7%	1.576	25	67	164	16.2%
1989	8.988	358	1.060	1.601	33.6%	805	100	97	130	40.6%	16.270	123	316	567	6.2%	801	42	75	113	28.7%	1.853	47	101	183	17.9%
1990	9.552	372	1.033	1.613	31.6%	933	94	91	124	33.1%	18.673	138	366	562	5.7%	977	47	100	150	30.4%	2.906	81	139	301	17.9%
1991	9.151	374	1.017	1.515	31.8%	1.211	103	149	152	33.4%	19.542	170	444	716	6.8%	956	30	74	138	25.3%	2.901	53	104	280	15.1%
1992	9.438	326	1.020	1.677	32.0%	1.127	93	126	169	34.4%	19.757	196	441	744	7.0%	833	37	75	99	24.7%	2.868	58	125	289	16.5%
1993	7.567	217	774	1.350	30.9%	1.085	71	123	149	31.6%	17.593	119	292	493	5.1%	799	29	64	110	25.4%	2.813	59	120	254	15.4%
1994	7.208	219	743	1.298	31.4%	1.242	97	133	157	31.2%	15.974	178	346	530	6.6%	637	15	35	74	19.5%	2.663	49	86	190	12.2%
1995	6.220	199	654	1.136	32.0%	1.156	97	141	148	33.4%	15.656	142	341	513	6.4%	696	30	34	90	22.1%	2.543	40	98	231	14.5%
1996	5.413	114	524	965	29.6%	821	47	78	103	27.8%	15.244	85	251	416	4.9%	489	16	43	66	25.6%	2.936	60	126	241	14.5%
1997	5.056	171	516	939	32.3%	723	73	107	66	34.0%	13.982	101	285	457	6.0%	439	17	41	55	25.7%	2.488	75	121	268	18.6%
1998	5.815	166	613	1.200	34.0%	939	64	123	108	31.4%	16.051	158	376	534	6.7%	490	21	36	73	26.5%	2.753	66	147	229	16.1%
1999	6.673	195	744	1.284	33.3%	1.173	95	118	148	30.8%	17.197	235	549	738	8.9%	669	26	71	93	28.4%	3.083	90	193	350	20.5%
2000	8.186	224	844	1.373	29.8%	1.304	92	147	144	29.4%	20.956	250	564	743	7.4%	599	24	52	83	26.5%	3.795	183	292	487	25.3%
2001	8.704	273	865	1.588	31.3%	1.499	170	172	169	34.1%	23.422	390	765	973	9.1%	591	46	61	81	31.8%	4.363	196	331	637	26.7%
2002	9.761	288	1.048	1.741	31.5%	1.767	197	213	197	34.4%	27.078	421	930	1.179	9.3%	857	59	90	105	29.6%	4.622	218	381	770	29.6%
2003	10.265	249	1.030	1.910	31.1%	1.721	180	155	198	31.0%	29.509	296	651	1.001	6.6%	793	68	112	105	35.9%	4.744	294	391	694	29.1%
2004	9.097	280	997	1.695	32.7%	1.742	179	185	201	32.4%	27.951	484	1.015	1.335	10.1%	829	87	105	114	36.9%	4.163	292	483	769	37.1%
2005	9.716	282	1.011	1.861	32.5%	1.884	206	184	243	33.6%	33.214	734	1.360	1.748	11.6%	850	83	109	122	36.9%	4.063	263	446	753	36.0%
2006	9.203	335	1.101	1.817	35.3%	1.684	142	189	240	33.9%	32.309	588	1.247	1.436	10.1%	610	71	81	83	38.5%	3.686	225	342	686	34.0%
2007	9.814	357	1.122	2.032	35.8%	2.023	217	238	268	35.7%	30.719	300	690	1.079	6.7%	784	79	93	123	37.6%	4.475	222	514	967	38.1%
2008	10.335	372	1.171	2.029	34.6%	2.159	219	249	274	34.4%	33.629	578	1.204	1.617	10.1%	891	70	105	162	37.8%	4.157	244	440	865	37.3%
2009	10.680	250	1.029	1.953	30.3%	2.415	255	292	324	36.1%	35.190	432	1.001	1.485	8.3%	929	58	97	153	33.2%	4.914	262	552	1.013	37.2%
2010	10.938	268	993	1.966	29.5%	2.550	245	232	359	32.8%	35.023	496	1.051	1.566	8.9%	940	76	120	162	38.1%	4.613	245	520	1.014	38.6%
2011	12.054	337	1.189	2.135	30.4%	2.657	271	252	323	31.8%	36.299	417	918	1.542	7.9%	889	64	110	133	34.5%	5.516	292	657	1.222	39.4%
2012	12.469	230	1.094	2.189	28.2%	2.952	331	300	345	33.1%	37.226	429	1.012	1.552	8.0%	1.056	76	116	196	36.7%	6.241	402	772	1.458	42.2%
2013	12.783	263	1.099	2.351	29.0%	3.215	334	286	371	30.8%	37.354	492	1.121	1.724	8.9%	842	55	87	153	35.0%	5.416	328	680	1.229	41.3%
2014	13.300	325	1.239	2.530	29.7%	3.513	425	309	364	31.3%	39.627	640	1.330	1.988	10.0%	1.156	83	143	230	39.4%	4.848	275	565	1.091	39.9%
2015	13.832	358	1.395	2.530	31.0%	3.520	405	361	396	33.0%	41.837	666	1.327	1.955	9.4%	1.104	82	168	211	41.8%	4.898	268	579	1.087	39.6%
2016	14.162	469	1.674	2.545	33.1%	3.782	483	354	347	31.3%	41.865	637	1.336	1.947	9.4%	1.124	109	170	216	44.0%	4.501	221	455	974	36.7%
2017	14.960	466	1.510	2.452	29.6%	3.825	447	342	378	30.5%	41.420	828	1.567	2.219	11.1%	1.175	137	176	200	43.7%	5.234	212	488	1.196	36.2%
2018	16.195	470	1.596	2.620	28.9%	4.175	399	415	422	29.6%	43.896	857	1.544	2.118	10.3%	1.245	117	176	241	42.9%	5.264	251	505	1.150	36.2%
<b>Összes</b>	<b>390.939</b>	<b>12.263</b>	<b>41.058</b>	<b>68.985</b>	<b>31.3%</b>	<b>63.113</b>	<b>6.156</b>	<b>6.169</b>	<b>7.545</b>	<b>31.5%</b>	<b>1.096.874</b>	<b>13.114</b>	<b>28.607</b>	<b>41.430</b>	<b>7.6%</b>	<b>29.404</b>	<b>1.762</b>	<b>3.024</b>	<b>4.476</b>	<b>31.5%</b>	<b>130.034</b>	<b>54.70</b>	<b>10.391</b>	<b>19.942</b>	<b>27.5%</b>
<b>Mínősítés</b>	<b>10.0%</b>	<b>33.6%</b>	<b>33.6%</b>	<b>56.4%</b>	<b>31.0%</b>	<b>31.0%</b>	<b>31.0%</b>	<b>31.0%</b>	<b>38.0%</b>	<b>31.5%</b>	<b>1.096.874</b>	<b>15.8%</b>	<b>34.4%</b>	<b>49.8%</b>	<b>19.0%</b>	<b>32.6%</b>	<b>48.3%</b>	<b>48.3%</b>	<b>48.3%</b>	<b>48.3%</b>	<b>15.3%</b>	<b>29.0%</b>	<b>29.0%</b>	<b>55.7%</b>	<b>27.5%</b>

GÍMSZARVAS GAZDÁLKODÁSI ADATOK

**Becsülés**

Megye	1994	1995	1996	1997	1998	1999	2000	2001	2002	2003	2004	2005	2006	2007	2008	2008	2009	2010	2011	2012	2013	2014	2015	2016	2017	2018	2019		
Bármnya	4.188	4.534	4.070	7.304	8.257	7.420	7.470	8.191	7.761	7.928	7.785	7.237	6.548	8.425	8.930	8.383	9.636	9.490	9.236	9.913	10.430	10.341	10.922	11.550	12.040	12.571			
Bács-Kiskun	1.657	1.984	4.328	4.147	4.251	3.334	3.656	4.029	4.271	4.574	4.479	4.419	4.180	4.342	4.250	4.362	4.613	4.760	5.457	5.350	5.444	5.531	5.590	5.715	6.390	6.826			
Békés	18	21	32	25	92	106	134	142	245	158	199	220	210	257	273	303	355	359	365	425	296	296	296	305	320	339	357		
Borsod-Abaúj-Zemplén	3.358	3.109	3.398	3.657	4.036	4.362	4.677	4.392	4.735	4.313	4.172	4.577	4.451	4.489	5.160	5.388	5.576	5.881	5.720	6.433	6.467	6.727	6.964	6.802	7.974	8.607			
Csongrád	24	19	24	48	71	88	96	117	130	104	108	88	73	78	89	133	147	157	147	185	155	114	104	112	149	155			
Fejér	2.597	2.316	2.205	3.303	3.766	3.875	3.985	4.096	3.955	4.050	4.050	3.888	3.905	4.058	3.527	3.407	3.288	3.407	3.288	3.392	3.557	3.344	3.103	3.195	3.081	3.031	2.741		
Győr-Ménfőcsanak	3.183	3.184	3.352	3.485	4.081	3.941	4.136	4.654	4.686	4.826	5.175	4.704	4.427	5.225	5.792	5.890	6.640	6.525	6.614	6.968	6.146	5.935	5.675	6.141	6.353	6.781			
Hajdú-Bihar	26	21	9	63	83	63	76	92	126	165	212	229	192	292	362	433	431	432	484	541	487	487	385	363	362	303	424		
Héves	2.931	2.590	3.068	3.030	3.444	3.604	3.770	3.545	3.589	3.519	3.181	3.237	3.439	4.209	3.830	3.979	4.203	4.704	5.399	5.607	5.229	5.117	5.395	3.817	5.915	6.207			
Komárom-Esztergom	2.897	2.467	1.741	6.022	3.717	3.535	3.625	3.910	4.037	3.734	3.527	3.589	3.358	3.463	4.332	4.344	4.344	4.352	4.510	4.813	4.700	4.585	4.286	4.496	4.496	5.236			
Nógrád	1.817	1.601	1.507	2.233	2.461	2.608	2.719	2.564	2.638	2.552	2.422	2.440	2.504	2.844	3.068	3.158	3.405	3.867	3.893	3.893	4.160	4.133	4.092	4.398	4.851	5.211	5.491		
Pest	3.750	3.187	3.405	3.447	3.964	4.280	4.343	4.673	4.501	4.387	3.805	3.521	3.339	3.145	3.445	3.586	3.824	3.841	3.929	4.657	4.827	4.633	4.678	4.289	5.047	5.245			
Somogy	7.583	7.037	6.853	9.732	10.335	10.828	11.523	12.549	12.275	11.877	11.903	11.358	11.021	13.652	13.911	14.502	14.856	15.280	15.439	16.500	16.501	16.622	16.844	15.778	17.065	17.776			
Szabolcs-Szatmár-Bereg	501	368	374	306	472	401	361	390	537	598	798	676	692	576	1.190	1.185	1.401	1.562	1.566	1.699	1.924	1.737	1.690	1.786	1.967	2.025			
Iászt-Nagykuns-Szolnok												2									3	8	8	6	7	6	5		
Tolna	3.400	3.118	2.603	5.601	5.176	5.184	4.970	5.251	5.336	4.991	4.107	4.458	4.252	5.289	5.913	6.325	7.074	7.225	7.135	6.787	7.437	7.279	6.174	6.435	6.170	6.023			
Vás	4.379	4.379	4.440	5.508	5.537	5.920	6.324	7.484	7.453	7.656	6.797	5.120	4.041	4.521	4.589	4.723	5.307	5.737	5.688	5.991	6.021	5.696	6.015	7.121	7.480	7.361			
Veszprém	5.500	5.540	7.863	7.276	7.630	8.333	8.675	8.827	9.656	9.574	8.703	7.296	8.917	10.014	10.339	10.140	9.949	10.381	10.665	11.240	12.114	10.665	11.240	10.657	11.180	11.924	12.058		
Zala	4.525	4.588	5.116	6.498	6.680	6.621	7.218	7.686	7.325	7.535	6.248	5.664	5.256	6.159	6.406	6.687	7.218	6.726	7.130	7.333	7.333	7.333	7.110	6.740	7.621	9.390	8.619		
<b>Összesen</b>	<b>52.334</b>	<b>50.063</b>	<b>54.388</b>	<b>71.685</b>	<b>74.053</b>	<b>74.503</b>	<b>77.758</b>	<b>82.592</b>	<b>82.572</b>	<b>82.623</b>	<b>78.542</b>	<b>74.130</b>	<b>69.184</b>	<b>79.941</b>	<b>85.081</b>	<b>87.126</b>	<b>94.135</b>	<b>92.577</b>	<b>94.135</b>	<b>96.485</b>	<b>101.647</b>	<b>102.124</b>	<b>101.425</b>	<b>100.001</b>	<b>101.464</b>	<b>111.450</b>	<b>114.508</b>		

**Hasznosítás**

Megye	1994	1995	1996	1997	1998	1999	2000	2001	2002	2003	2004	2005	2006	2007	2008	2008	2009	2010	2011	2012	2013	2014	2015	2016	2017	2018	2019		
Bármnya	2.460	2.003	1.739	2.145	2.340	2.633	3.055	4.048	5.481	5.173	4.907	3.895	3.511	3.744	3.792	4.082	3.853	4.532	4.477	4.477	5.067	5.010	5.357	5.129	5.924	6.440			
Bács-Kiskun	1.690	1.776	1.987	907	735	835	934	1.070	1.382	1.445	1.407	1.433	1.313	1.346	1.333	1.387	1.559	1.649	1.649	1.734	1.856	2.003	2.213	2.478	2.586	2.812			
Békés	22	15	15	26	15	25	33	45	50	48	80	55	50	64	61	47	49	68	68	71	58	80	90	127	119	134			
Borsod-Abaúj-Zemplén	922	842	789	686	657	873	918	1.007	1.360	1.450	1.480	1.494	1.393	1.534	1.743	1.738	2.058	2.067	2.186	2.186	2.968	3.211	3.323	3.191	3.292	3.942			
Csongrád	13	15	12	10	10	7	15	13	11	8	20	19	17	13	13	19	19	24	23	31	51	50	61	62	75	88			
Fejér	870	893	835	918	733	936	1.348	1.521	1.510	1.757	1.671	1.696	1.535	1.249	1.268	1.295	1.215	1.267	1.329	1.329	1.200	1.458	1.378	1.363	1.370	1.408			
Győr-Ménfőcsanak	1.192	1.205	1.187	887	962	1.236	1.534	1.671	2.171	2.315	2.355	2.472	2.229	2.689	3.037	3.373	3.623	4.159	4.344	4.344	3.950	3.959	3.765	3.792	3.943	4.201			
Hajdú-Bihar	14	6	6	2	2	6	18	7	9	19	15	15	22	30	27	44	44	91	86	82	125	119	116	120	122	157			
Héves	1.087	1.052	1.069	870	1.051	1.028	958	992	1.244	1.254	1.207	1.274	1.263	1.411	1.379	1.463	1.724	1.954	2.097	2.420	2.420	2.713	2.991	3.256	3.246	3.664			
Komárom-Esztergom	985	876	851	947	1.041	1.071	1.411	1.679	2.052	2.014	1.870	1.915	1.289	1.559	1.803	1.953	1.951	2.051	2.364	2.364	2.016	2.117	2.112	1.875	2.104	2.484			
Nógrád	773	724	580	603	745	759	893	1.027	1.151	1.125	1.118	1.159	1.160	1.334	1.537	1.574	1.617	1.911	1.218	1.218	2.329	2.878	3.034	3.088	3.316	4.149			
Pest	1.655	1.503	1.407	1.028	1.275	1.493	1.574	1.811	2.252	2.092	1.868	1.603	1.241	1.378	1.616	1.788	1.691	1.691	1.918	1.918	1.981	2.077	2.232	2.232	2.827	3.260			
Somogy	3.392	2.654	2.556	3.084	3.121	3.893	5.056	5.987	7.404	7.404	7.563	6.401	5.982	5.906	6.322	7.115	6.692	7.846	8.168	8.168	9.140	8.588	8.935	8.866	8.257	9.135			
Szabolcs-Szatmár-Bereg	24	18	25	15	19	2	3	6	45	100	163	144	91	108	179	177	228	266	274	364	364	508	544	553	604	705			
Iászt-Nagykuns-Szolnok																													
Tolna	1.386	1.135	1.035	1.594	1.290	1.419	1.534	1.880	2.429	2.523	2.284	2.226	1.920	2.134	2.308	2.589	2.700	3.566	4.067	4.067	3.953	4.034	3.999	3.697	3.711	3.851			
Vás	2.491	2.182	1.826	1.675	1.831	2.166	3.014	3.447	3.857	4.801	4.304	3.392	2.890	3.116	2.955	2.875	3.523	4.303	4.239	4.239	4.628	4.550	4.215	4.159	4.408	5.085			
Veszprém	3.249	3.107	2.723	2.392	2.194	3.306	3.743	4.180	5.190	5.267	5.185	4.358	3.507	3.705	3.803	4.251	4.658	5.105	5.063	5.063	5.489	5.397	5.618	5.763	6.436	7.523			
Zala	1.717	1.818	1.784	1.902	2.084	2.496	2.858	3.669	4.110	4.429	3.719	3.146	2.544	2.647	3.065	3.570	3.880	5.161	5.186	5.186	5.503								

DÁMSZARVAS GAZDÁLKODÁSI ADATOK

Megye	Becsülés																										
	1994	1995	1996	1997	1998	1999	2000	2001	2002	2003	2004	2005	2006	2007	2008	2009	2010	2011	2012	2013	2014	2015	2016	2017	2018	2019	
Baranya	369	328	376	416	465	538	515	576	506	428	435	480	476	609	690	606	706	855	869	1,043	1,191	924	1,033	1,053	1,406	1,442	
Bács-Kiskun	833	795	911	1,320	1,265	1,167	1,302	1,355	1,893	1,708	1,803	1,723	1,939	1,572	1,723	2,162	2,783	2,394	3,762	3,412	3,575	3,269	3,226	3,302	3,421	3,707	
Békés	3,568	3,001	708	334	4,092	3,495	2,959	2,715	2,892	2,349	2,672	2,645	2,758	2,823	2,693	2,744	3,094	3,493	3,638	3,727	3,812	3,985	4,108	4,560	4,000	4,216	
Borsod-Abaúj-Zemplén	100	110	113	164	103	84	97	47	140	61	113	134	137	423	533	148	143	150	107	151	161	150	163	145	165	167	
Csongrád	86	99	1,917	46	87	102	151	208	248	232	288	365	387	439	465	513	620	765	842	944	827	744	747	760	795	1,154	
Győr-Ménfőcsanak	629	393	221	336	477	534	562	594	604	643	735	546	892	988	942	1,028	1,093	1,148	1,191	1,166	1,196	1,464	1,435	1,370	1,374	1,405	
Győr-Ménfőcsanak	622	663	129	730	886	1,145	1,082	1,215	1,099	1,259	1,304	1,384	1,348	1,334	1,446	1,378	1,440	1,487	1,489	1,515	1,384	1,303	1,303	1,107	1,746	3,507	
Hajdú-Bihar	196	220	156	141	152	128	145	136	254	109	107	101	98	90	122	115	140	122	139	125	153	135	161	128	149	187	
Komárom-Esztergom	461	435	340	1,023	629	498	544	611	562	551	470	436	507	627	791	877	1,032	1,152	1,475	1,563	1,586	1,565	1,524	1,487	1,670	1,787	
Nógrád	137	130	195	179	287	225	184	115	127	113	118	150	146	207	222	262	264	336	522	565	576	554	681	833	1,035	1,228	
Pest	2,070	2,254	1,731	710	1,818	1,909	1,975	2,131	2,081	2,022	1,896	1,937	2,011	1,992	2,111	2,347	2,536	2,625	3,071	3,068	3,120	3,207	3,559	3,826	4,389	4,746	
Somogy	2,339	2,047	2,212	2,470	3,408	3,356	3,948	4,440	4,585	4,347	4,610	5,380	5,192	6,845	6,617	6,576	6,949	6,845	6,660	6,573	6,089	5,338	5,245	4,844	3,950	4,485	
Szabolcs-Szatmár-Bereg	768	571	496	405	593	594	694	679	758	710	751	707	853	807	1,072	983	1,079	1,207	1,373	1,396	1,526	1,370	1,605	1,634	2,123	2,068	
Jász-Nagykun-Szolnok																											
Tolna	3,841	3,449	3,677	4,137	4,590	4,641	4,449	4,129	4,158	4,214	3,359	3,396	3,516	4,136	4,471	4,814	5,650	5,316	4,848	4,848	4,848	4,848	4,848	4,848	4,848	4,848	
Vas	456	420	467	422	413	375	376	437	628	539	535	442	280	300	381	413	455	477	453	458	479	498	542	580	692	854	
Veszprém	500	520	1,238	778	917	868	1,011	940	937	952	893	876	867	843	941	921	1,002	1,015	1,066	1,174	1,139	1,351	1,425	1,796	1,776	1,791	
Zala	323	295	314	322	367	411	429	356	346	358	279	339	311	357	381	394	440	428	357	281	255	236	213	277	308	117	
Összesen	17,564	15,975	16,069	14,126	20,738	20,259	20,645	20,943	22,107	20,933	20,577	21,620	21,791	25,193	25,895	26,717	30,043	30,467	33,239	32,749	35,063	33,755	33,872	34,725	35,630	39,440	

Hasznosítás

Megye	Hasznosítás																									
	1994	1995	1996	1997	1998	1999	2000	2001	2002	2003	2004	2005	2006	2007	2008	2009	2010	2011	2012	2013	2014	2015	2016	2017	2018	2019
Baranya	108	85	81	43	69	94	99	177	183	161	234	210	185	279	208	250	331	362	396	462	442	482	360	396	545	
Bács-Kiskun	186	186	185	190	231	207	281	274	286	406	376	496	445	381	479	644	844	620	864	1,057	1,100	1,018	1,023	897	1,072	
Békés	341	224	127	1,265	1,480	1,095	609	806	1,018	824	954	843	1,007	917	1,216	964	1,011	975	1,204	1,485	1,608	1,413	1,846	1,275	1,575	
Borsod-Abaúj-Zemplén	13	16	20	13	20	28	23	28	27	32	30	30	37	35	34	22	22	28	24	24	48	35	41	40	37	105
Csongrád	1,301	1,151	594		9	5	9	14	19	28	29	51	44	57	77	90	101	121	139	153	194	142	155	197	225	
Fejér	31	21	21	105	76	114	157	200	248	272	296	400	291	247	318	418	418	433	495	467	411	566	566	565	496	579
Győr-Ménfőcsanak	25	38	28	11	16	18	31	53	59	71	94	83	70	126	132	145	210	266	291	283	290	257	524	361	372	
Hajdú-Bihar	4	4	1	72	125	178	223	237	307	285	340	338	246	290	426	430	398	596	522	709	780	892	1,040	1,069	1,478	
Heves	30	26	17	13	24	35	32	23	21	28	24	17	11	12	13	19	38	15	27	31	45	49	33	36	50	
Komárom-Esztergom	74	86	78	90	96	127	173	168	205	180	202	178	122	172	198	225	275	318	408	427	452	627	577	553	675	
Nógrád	29	35	44	32	44	51	51	50	66	63	79	85	95	109	128	152	162	166	236	252	259	305	413	615	950	
Pest	302	297	365	262	265	323	237	291	365	381	347	400	443	557	688	742	719	874	996	1,078	1,323	1,476	1,620	1,887	2,062	
Somogy	1,533	1,260	1,137	1,239	1,602	1,510	2,153	2,272	3,398	3,041	3,827	3,500	3,383	3,858	3,550	3,913	3,232	3,386	2,783	2,412	2,111	1,912	1,969	1,440	1,514	
Szabolcs-Szatmár-Bereg	117	37	29	43	38	57	72	63	141	218	201	231	207	170	242	229	329	376	385	488	656	630	676	876	923	
Jász-Nagykun-Szolnok	468	334																								
Tolna	1,562	1,304	1,048	981	1,055	1,192	1,366	1,336	2,099	1,794	1,425	1,344	1,309	1,504	1,366	1,569	1,955	2,287	2,797	2,619	3,065	2,834	2,483	2,500	2,553	
Vas	58	69	61	50	58	68	70	36	81	104	126	117	74	92	106	158	139	175	185	191	251	192	190	212	237	
Veszprém	278	252	277	269	217	311	340	356	432	436	460	493	356	360	310	443	486	513	628	582	601	673	724	796	907	
Zala	33	37	45	44	35	67	50	68	49	113	69	87	78	135	161	166	70	139	110	90	74	72	94	73	105	
Összesen	6,493	5,462	4,389	4,722	5,460	5,480	5,976	6,652	9,004	8,437	9,113	8,903	8,403	9,301	9,652	10,499	10,756	11,717	12,472	12,792	13,863	13,601	14,346	13,730	15,949	

Hasznosítási arány 37.0% 34.2% 27.3% 33.4% 26.3% 27.0% 28.9% 31.8% 40.7% 40.3% 44.3% 41.2% 38.6% 36.9% 37.3% 39.3% 35.8% 38.5% 37.5% 39.1% 39.5% 40.3% 42.4% 39.5% 44.8%

ÖZ GAZDÁLKODÁSI ADATOK

Megye	Becsülés																									
	1994	1995	1996	1997	1998	1999	2000	2001	2002	2003	2004	2005	2006	2007	2008	2009	2010	2011	2012	2013	2014	2015	2016	2017	2018	2019
Baranya	12,911	12,338	12,364	13,627	15,035	15,165	15,295	16,653	16,163	16,079	16,565	16,807	15,915	16,127	15,866	15,558	16,602	15,594	15,132	15,334	16,010	15,243	14,334	13,213	12,234	12,196
Bács-Kiskun	21,106	20,624	22,815	23,963	26,770	26,248	28,461	30,825	32,378	34,220	32,714	33,703	30,678	30,965	32,312	32,333	34,550	34,601	35,448	35,798	35,583	32,752	31,621	31,161	31,976	33,146
Békés	18,822	19,219	18,910	14,259	18,799	21,262	22,900	24,572	26,441	26,671	25,979	24,986	26,009	26,615	28,538	30,682	33,132	34,096	37,638	39,118	40,006	39,727	40,636	43,174	43,308	43,133
Borsod-Abaúj-Zemplén	12,443	12,742	14,157	13,320	14,120	14,362	15,441	15,567	16,602	16,645	16,015	16,986	17,258	17,120	19,763	20,541	22,406	21,221	20,530	21,232	21,343	21,511	21,470	20,757	23,936	24,793
Csongrád	13,378	13,090	13,383	13,530	13,661	14,240	14,972	16,062	16,479	16,062	16,679	16,608	15,670	18,396	20,928	22,555	24,968	25,802	25,891	27,570	25,400	23,831	23,811	24,849	26,686	27,039
Győr-Ménfőcsanak	11,080	10,883	11,452	6,721	12,852	13,057	14,408	14,910	14,791	15,791	16,274	16,297	15,899	16,601	17,012	16,947	17,649	17,313	18,238	18,870	17,257	16,972	17,097	18,885	20,389	21,418
Győr-Ménfőcsanak-Sopron	13,213	12,836	14,017	12,312	15,324	16,272	17,752	18,068	18,972	19,724	19,274	16,888	15,751	16,806	18,313	19,145	20,001	19,101	19,875	19,905	19,386	18,833	19,308	19,845	20,389	21,418
Hajdú-Bihar	16,613	16,444	15,380	14,630	15,492	16,312	17,762	19,261	20,889	22,039	22,789	22,523	22,359	22,791	22,829	24,397	26,158	24,369	25,228	25,227	24,829	23,673	23,818	23,027	24,599	25,385
Heves	7,825	7,942	9,179	9,020	11,062	10,756	11,612	10,723	10,400	10,473	9,764	6,505	6,560	6,848	6,706	7,449	7,835	7,713	7,453	7,992	11,968	12,320	11,968	12,354	13,733	14,028
Komárom-Esztergom	5,150	4,627	5,055	11,048	6,190	6,123	7,032	7,625	6,743	6,503	6,848	6,706	6,848	6,706	7,449	7,835	7,713	7,453	7,992	11,968	12,320	11,968	12,354	13,733	14,028	
Nógrád	3,135	2,715	2,681	3,580	3,848	4,041	4,635	4,565	4,474	3,950	3,859	3,704	3,780	4,184	4,181	3,989	4,136	4,603	4,754	4,895	4,908	4,843	5,082	5,972	5,876	5,709
Pest	13,810	13,007	13,471	10,119	14,087	14,738	15,910	17,252	18,052	18,247	17,687	16,768	17,531	17,513	18,834	19,338	20,185	19,945	20,624	21,258	21,170	21,243	21,606	21,208	22,879	23,482
Szeged-Csongrád	17,415	14,430	15,095	14,943	16,180	16,414	16,809	17,237	17,855	18,267	18,485	18,484	17,785	18,486	18,181	18,483	18,122	16,889	16,692	17,087	16,928	15,934	14,957	14,213	15,436	15,290
Szabolcs-Szatmár-Bereg	16,742	16,599	17,744	16,561	18,209	19,462	21,359	22,359	22,600	23,009	20,483	20,835	21,686	22,678	24,753	25,586	26,687	24,813	27,179	27,730	26,615	26,682	25,464	26,907	28,590	29,642
Jász-Nagykun-Szolnok	15,680	13,955	15,365	15,461	16,933	16,787	17,129	17,906	19,364	17,714	17,530	18,184	17,638	18,852	19,610	19,704	19,553	17,435	17,166	18,529	18,879	18,210	18,065	18,113	18,421	18,168
Tolna	8,628	8,108	8,256	9,205	9,528	9,937	10,370	10,574	11,721	12,169	12,052	10,346	8,425	9,288	9,097	8,865	9,279	9,247	8,846	9,363	9,299	8,902	9,339	9,795	11,191	11,346
Vas	10,000	9,460	10,799	11,415	12,844	12,470	13,241	13,145	12,937	12,759	12,798	11,814	11,276	12,167	12,536	11,953	11,989	11,251	11,423	11,113	11,125	11,125	11,211	11,851	12,401	12,629
Veszprém	7,234	6,561	6,997	8,126	8,831	9,119	9,604	9,579	9,596	9,971	9,185	9,155	9,608	10,513	10,994	10,911	11,267	10,487	10,075	10,633	10,153	9,308	9,347	10,200	11,547	11,493
Zala	239,175	232,861	245,599	237,573	268,939	274,149	293,754	307,807	319,553	324,414	320,859	316,157	310,852	322,155	340,384	349,597	366,552	355,667	365,569	375,095	370,581	359,168	357,345	361,458	381,622	385,839
Összesen	239,175	232,861	245,599	237,573	268,939	274,149	293,754	307,807	319,553	324,414	320,859	316,157	310,852	322,155	340,384	349,597	366,552	355,667	365,569	375,095	370,581	359,168	357,345	361,458	381,622	385,839

Hasznosítás

Megye	Hasznosítás																									
	1994	1995	1996	1997	1998	1999	2000	2001	2002	2003	2004	2005	2006	2007	2008	2009	2010	2011	2012	2013	2014	2015	2016	2017	2018	2019
Baranya	2,794	2,303	1,969	2,037	1,893	2,351	2,696	3,134	3,363	3,799	4,154	3,593	3,147	3,375	3,374	3,467	3,320	3,403	3,242	3,686	3,934	3,889	3,134	3,100	3,078	
Bács-Kiskun	3,048	2,903	3,015	3,270	3,531	4,021	4,822	5,362	6,111	5,978	6,547	9,954	8,891	8,247	8,681	8,512	8,621	8,421	8,378	8,161	9,585	9,583	9,215	8,626	8,772	
Békés	2,813	2,811	2,127	1,831	2,198	2,732	3,321	4,067	4,926	5,456	5,897	6,033	5,670	5,311	5,385	5,814	5,479	6,757	7,478	9,178	9,931	10,376	11,273	11,536	12,021	
Borsod-Abaúj-Zemplén	1,621	1,710	1,833	1,780	1,911	2,201	2,590	3,159	4,242	4,480	4,589	4,775	4,458	4,860	5,208	5,339	5,177	5,510	5,517	5,757	6,423	6,934	6,824	6,933	8,275	
Csongrád	2,841	2,751	2,372	1,888	2,548	2,612	3,103	3,513	3,732	3,937	4,368	4,931	5,004	5,041	5,483	5,940	6,429	6,652	7,063	7,439	7,949	7,960	7,312	8,227	8,484	
Fejér	1,425	1,485	1,411	1,296	1,690	1,924	2,256	2,560	2,883	3,123	3,567	3,584	3,205	2,782	3,288	3,249	3,141	3,233	3,461	3,476	4,090	4,199	4,139	3,582	3,949	
Győr-Ménfőcsanak	2,264	2,298	2,482	2,101	2,312	2,831	4,180	4,893	5,504	6,033	7,067	6,618	5,519	5,229	5,967	6,285	6,769	6,619	7,370	6,996	7,895	7,931	7,982	7,603	7,694	
Hajdú-Bihar	1,636	1,544	1,391	1,563	1,320	1,566	1,934	2,348	2,948	3,005	3,541	4,176	3,649	3,299	3,753	3,742	3,856	4,989	5,140	5,557	6,843	7,130	7,648	7,512	7,521	
Heves	1,068	1,037	1,258	1,355	1,480	1,613	1,878	2,419	2,787	2,829	2,848	2,747	2,927	2,843	2,968	2,961	3,010	3,383	3,398	3,524	4,717	4,803	4,486	4,410	4,727	
Komárom-Esztergom	667	621	757	687	813	918	932	1,186	1,307	1,422	1,653	1,766	1,518	1,584	1,752	1,873	1,900	1,878	1,866	1,794	1,809	1,795	1,602	1,776	2,156	
Nógrád	698	765	784	972	1,163	1,255	1,527	1,795	1,849	1,815	2,077	2,088	1,955	1,847	1,877	1,908	1,751	1,837	1,966	2,061	2,304	2,418	2,334	2,552	2,855	
Pest	2,599	2,585	2,641	2,257	2,633	2,993	3,416	4,198	5,018	5,055	6,066	5,767	5,433	5,208	5,510	5,623	5,481	5,702	6,036	6,061	6,567	6,819	6,742	7,196	7,685	
Szeged	2,954	2,669	2,416	2,449	2,639	2,919	3,614	4,180	4,600	4,811	5,296	4,967	4,619	4,275	4,463	5,046	4,471	4,170	4,263	4,263	4,360	4,311	4,292	3,942	3,968	
Szabolcs-Szatmár-Bereg	1,626	1,677	1,422	1,357	1,268	1,487	1,745	2,192	2,924	3,922	6,076	6,696	5,597	4,697	5,602	5,991	6,296	7,149	7,668	8,376	10,208	10,179	10,473	10,241	10,280	
Jász-Nagykun-Szolnok	2,908	3,019	2,637	2,361	2,364	2,711	3,000	3,432	4,015	4,100	4,775	5,038	4,921	5,327	5,684	6,031	6,244	6,308	7,034	7,907	8,091	8,270	8,091	8,270	8,933	
Tolna	1,990	1,827	1,715	1,843	1,972	2,134	2,338	2,719	3,617	3,411	3,560	3,693	3,288	3,337	3,702	4,075	3,187	3,255	3,402	3,563	3,614	4,003	3,785	3,626	3,725	
Vas	2,194	2,171	1,808	1,754	2,051	2,415	2,668	2,804	3,248	3,795	4,536	4,336	3,402	4,378	4,534	4,464	4,439	4,581	4,282	4,633	4,664	4,456	4,379	4,316	4,689	
Veszprém	2,625	2,616	2,218	2,382	2,660	3,784	4,365	4,888	5,893	5,658	5,036	5,133	4,146	4,281	4,716	5,081	4,919	4,712	4,917	4,597	4,763	5,009	4,874	5,005	5,263	
Zala	1,030	1,098	1,167	1,298	1,448	1,970	2,369	3,002	3,512	4,216	4,286	3,986	3,296	3,544	4,136	4,632	4,624	4,864	4,873	4,920	4,771	4,991	5,073	5,178	5,212	
Összesen	38,801	37,890	35,423	34,481	37,894	44,437	52,754	61,851	72,479	76,845	85,939	89,920	80,645	79,465	86,083	89,773	88,552	93,146	96,574	100,350	111,461	114,693	113,658	113,631	119,287	

Hasznosítási arány 16.2% 16.3% 14.4% 14.5% 14.5% 14.1% 16.2% 18.0% 20.1% 22.7% 23.7% 26.8% 28.4% 2

MUFLON

Megye	Becsülés																											
	1994	1995	1996	1997	1998	1999	2000	2001	2002	2003	2004	2005	2006	2007	2008	2009	2010	2011	2012	2013	2014	2015	2016	2017	2018	2019		
Baranya	12			13	7	20	14	9						20	8	33	65	64	44	175	67	250	418	220	305	156	376	316
Bács-Kiskun																									13	20	22	23
Békés	2	2	4	6	5	7	6	5	4	5														21	25	30	31	
Borsod-Abaúj-Zemplén	1,412	1,269	1,471	1,540	1,553	1,577	1,718	1,336	1,429	1,261	949	1,273	1,181	1,461	1,493	1,587	1,745	1,855	1,754	1,919	1,827	1,689	1,722	1,470	1,626	1,464		
Csongrád																								35	40	55	55	
Győr-Moson-Sopron	1,080	868	938	1,037	1,164	961	1,194	1,121	1,000	952	871	825	821	859	599	658	680	731	831	774	644	702	786	651	829	564		
Hajdú-Bihar																								56	71	73	67	
Heves	2,278	2,378	3,023	2,909	2,800	2,697	2,536	2,185	2,195	2,109	1,845	1,698	2,545	3,253	2,839	2,916	3,103	3,291	3,676	3,694	3,477	2,982	3,014	1,700	3,082	3,357		
Komárom-Esztergom	1,500	1,371	791	2,400	1,213	924	1,303	1,206	1,139	1,085	987	1,109	971	1,064	1,169	1,238	1,168	1,131	1,249	1,414	1,438	1,499	1,370	1,497	1,824	1,843		
Nógrád	568	510	384	552	545	480	532	382	350	284	254	266	297	480	500	575	648	780	1,034	1,080	986	929	1,002	903	1,118	1,057		
Pest	860	882	1,046	1,045	1,269	1,494	1,543	1,994	1,924	1,920	1,203	1,279	1,328	1,095	1,175	1,205	1,340	1,280	1,459	1,709	1,676	1,621	1,549	1,520	1,511	1,386		
Somogy	135	180	150	183	190	199	193	195	165	258	200	225	210	185	235	280	189	349	347	372	354	384	348	364	364	390		
Szabolcs-Szatmár-Bereg	29	58	85	20	26	25	30	64	94	112	115	117	134	140	131	97	99	93	69	121	77	32	33	33	146	97	88	
Jász-Nagykun-Szolnok																												
Tohna	6	4	6	8	7	8		59	41	12	4	3	2	2	2	2	2	2	2	2	2	2	1					
Vas	82	76	86	65	95	95	110	110	100	110	110	95	75	85	70	64	64	62	60	60	60	60	45	60	60	72	99	
Veszprém	800	750	1,303	769	936	922	1,169	1,144	1,023	1,136	1,231	1,278	1,140	1,260	1,480	1,640	1,652	1,518	1,481	1,535	1,469	1,566	1,783	2,056	2,036	2,190		
Zala	70	110	90	114	128	144	125	110	100	81	86	85	67	140	122	141	123	131	138	133	114	118	133	140	135	95		
<b>Összesen</b>	<b>8,841</b>	<b>8,502</b>	<b>9,398</b>	<b>10,661</b>	<b>9,955</b>	<b>9,570</b>	<b>10,493</b>	<b>9,938</b>	<b>9,577</b>	<b>9,341</b>	<b>7,875</b>	<b>8,288</b>	<b>8,793</b>	<b>10,090</b>	<b>9,920</b>	<b>10,521</b>	<b>10,985</b>	<b>11,493</b>	<b>12,256</b>	<b>13,154</b>	<b>12,625</b>	<b>11,856</b>	<b>12,230</b>	<b>10,819</b>	<b>13,250</b>	<b>13,025</b>		

Hasznosítás

Megye	Hasznosítás																										
	1994	1995	1996	1997	1998	1999	2000	2001	2002	2003	2004	2005	2006	2007	2008	2009	2010	2011	2012	2013	2014	2015	2016	2017	2018	2019	
Baranya															2	2	1	5	9	27	35	62	44	27	14	10	
Bács-Kiskun																							6	5	2	2	
Békés																						4	3	2	2	4	
Borsod-Abaúj-Zemplén	205	247	258	234	306	355	276	379	627	494	463	460	457	514	596	572	667	560	668	657	760	662	552	492	580		
Csongrád																										9	
Fejér	209	239	168	119	166	215	293	349	364	329	254	235	155	81	96	91	161	239	197	131	140	160	147	103	116		
Győr-Moson-Sopron						1	1	1	5	1															8	11	8
Hajdú-Bihar																											
Heves	548	829	896	600	862	833	702	625	815	629	713	732	678	709	870	935	1,002	1,055	1,164	987	1,232	1,210	1,108	1,022	1,207		
Komárom-Esztergom	123	120	119	110	162	249	215	263	433	408	337	298	201	225	315	296	365	343	408	292	362	337	372	411	544		
Nógrád	107	107	89	99	90	124	145	126	166	142	143	149	125	204	246	246	253	262	346	311	398	382	330	362	496		
Pest	296	355	279	160	251	462	388	542	843	515	477	443	286	359	323	391	327	306	461	295	469	413	349	404	510		
Somogy	33	20	23	31	29	35	34	49	65	40	65	59	72	59	47	56	77	49	53	26	30	35	53	28	21		
Szabolcs-Szatmár-Bereg	7		3				3	4	4	23	16	17	18	17	26	19	28	48	53	25	59	48	60	101	312		
Jász-Nagykun-Szolnok																											
Tohna	2						2	5	15	9										1					45		
Vas	12	14	7	5	16	20	25	34	25	34	23	25	17	26	15	17	19	16	13	14	12	11	11	11	8	12	
Veszprém	244	373	210	99	110	307	240	286	353	302	326	344	261	345	338	468	454	522	518	403	535	468	506	581	566		
Zala	17	40	28	7	10	14	8	12	8	10	12	19	13	12	24	12	15	33	40	28	45	43	44	28	24		
<b>Összesen</b>	<b>1,803</b>	<b>2,344</b>	<b>2,080</b>	<b>1,464</b>	<b>2,002</b>	<b>2,615</b>	<b>2,332</b>	<b>2,674</b>	<b>3,723</b>	<b>2,936</b>	<b>2,829</b>	<b>2,781</b>	<b>2,283</b>	<b>2,564</b>	<b>2,912</b>	<b>3,121</b>	<b>3,412</b>	<b>3,485</b>	<b>4,002</b>	<b>3,244</b>	<b>4,129</b>	<b>3,831</b>	<b>3,574</b>	<b>3,623</b>	<b>4,412</b>		

Hasznosítási arány 20.4% 27.6% 22.1% 13.7% 20.1% 27.3% 22.2% 26.9% 38.9% 31.4% 35.9% 33.6% 26.0% 25.4% 29.4% 29.7% 31.1% 30.3% 32.7% 24.7% 32.7% 32.3% 29.2% 29.2% 33.5% 33.3%

VADDISZNÓ GAZDÁLKODÁSI ADATOK

Megye	Becsés																									
	1994	1995	1996	1997	1998	1999	2000	2001	2002	2003	2004	2005	2006	2007	2008	2009	2010	2011	2012	2013	2014	2015	2016	2017	2018	2019
Baranya	3.368	3.202	3.325	3.336	5.792	6.009	6.283	7.497	7.743	7.137	5.910	5.928	6.162	7.039	7.833	7.920	8.438	8.090	8.482	9.363	7.893	7.905	7.955	8.310	8.073	7.404
Bács-Kiskun	1.001	1.181	2.328	1.935	2.689	2.764	3.071	3.756	4.653	4.998	3.910	4.128	3.891	3.816	5.056	5.550	6.641	5.512	6.932	7.510	7.092	6.425	5.539	5.421	4.793	4.589
Békés	145	88	123	189	247	385	360	472	522	532	631	684	625	688	767	625	1.368	1.559	1.631	2.052	1.028	1.280	1.001	1.690	1.209	952
Borsod-Abaúj-Zemplén	3.706	3.231	2.775	3.980	5.524	5.297	6.455	6.497	7.386	6.393	5.701	6.839	6.345	6.444	6.939	7.086	7.066	7.524	7.559	8.726	8.612	8.974	9.004	8.335	8.707	7.936
Csongrád	85	69	83	89	143	158	264	384	475	426	398	345	265	372	464	588	671	755	752	1.066	792	684	734	896	925	792
Fejér	2.523	2.650	2.829	3.240	3.785	3.846	4.009	4.786	5.361	5.540	5.897	5.973	6.849	6.035	6.861	6.405	7.022	7.023	6.645	7.398	5.774	6.370	6.469	5.395	6.033	5.445
Győr-Ménfőcsanak	2.658	2.515	2.969	3.654	4.562	4.289	4.963	5.114	5.378	5.175	4.748	4.723	3.993	4.763	5.449	5.594	6.098	6.284	6.345	6.809	5.494	5.175	4.855	5.414	5.770	5.543
Hajdú-Bihar	603	521	284	587	709	909	889	1.069	1.366	1.681	1.567	1.733	1.596	2.155	2.411	3.209	3.650	3.481	3.749	3.702	3.711	3.095	2.765	2.573	2.143	1.913
Héves	2.645	1.999	1.736	2.568	3.583	3.455	3.709	3.385	4.100	3.952	3.384	3.611	4.323	4.103	4.507	3.944	4.896	4.889	5.905	5.419	5.010	4.741	4.968	3.087	4.716	3.642
Komárom-Esztergom	2.484	2.128	1.908	5.779	2.782	3.141	4.053	4.198	4.233	4.038	3.697	4.162	3.664	3.502	4.223	4.194	4.375	4.712	5.331	6.056	5.166	5.220	5.089	5.286	5.746	4.835
Nógrád	2.069	1.281	1.193	2.323	2.957	3.061	3.610	3.710	4.485	4.325	3.512	3.342	3.214	3.366	3.797	3.416	3.931	4.387	4.932	5.158	4.200	4.297	4.361	4.586	4.575	3.814
Pest	3.720	3.224	3.606	3.750	4.823	5.430	5.568	6.312	7.326	7.055	6.329	5.700	5.477	5.124	6.202	6.231	6.938	7.072	7.806	8.827	8.148	7.994	7.924	7.540	7.230	6.576
Somogy	3.726	4.911	5.125	7.560	8.319	9.105	9.379	9.815	11.300	10.554	9.668	9.604	9.837	11.225	12.276	12.379	11.630	11.617	11.450	12.351	11.075	10.912	10.900	10.654	11.922	11.345
Szabolcs-Szatmár-Bereg	985	998	942	764	1.200	954	1.323	1.840	2.401	2.904	2.736	2.663	2.690	2.585	3.819	3.999	4.129	4.430	4.917	4.991	5.141	4.767	4.613	4.880	3.489	2.860
Jász-Nagykun-Szolnok	98	99	133	81	91	117	108	73	126	105	138	126	175	156	268	321	499	651	873	1.016	1.018	1.059	971	1.022	883	800
Tolna	2.636	2.496	2.212	3.630	4.477	5.440	5.426	5.836	6.011	4.725	4.801	5.390	5.484	5.890	6.667	7.636	8.114	6.897	6.732	7.703	6.814	6.649	6.225	7.200	6.759	6.758
Vas	2.141	2.198	2.373	3.094	3.329	3.845	4.850	5.030	5.639	4.726	3.428	2.722	2.361	3.055	3.646	4.015	4.463	4.934	4.484	4.985	4.301	4.130	4.098	4.466	5.218	5.170
Veszprém	4.000	4.150	5.811	6.227	6.193	5.442	6.574	7.315	7.170	7.234	7.202	6.659	6.686	6.814	8.496	9.440	9.008	9.320	9.292	9.439	7.758	10.061	8.337	8.609	8.106	7.897
Zala	2.866	2.991	3.349	4.114	4.587	5.033	5.160	5.344	5.196	5.137	4.116	3.955	4.024	4.691	6.291	6.534	7.177	6.401	6.627	7.687	6.188	5.916	5.609	7.236	8.899	7.579
<b>Összesen</b>	<b>41.459</b>	<b>39.532</b>	<b>43.104</b>	<b>58.900</b>	<b>65.792</b>	<b>68.680</b>	<b>76.054</b>	<b>82.433</b>	<b>91.071</b>	<b>86.637</b>	<b>77.773</b>	<b>78.143</b>	<b>77.661</b>	<b>81.723</b>	<b>95.582</b>	<b>99.340</b>	<b>106.734</b>	<b>105.838</b>	<b>109.788</b>	<b>120.178</b>	<b>105.215</b>	<b>105.654</b>	<b>101.797</b>	<b>102.600</b>	<b>105.196</b>	<b>95.850</b>

Megye	Hasznosítás																									
	1994	1995	1996	1997	1998	1999	2000	2001	2002	2003	2004	2005	2006	2007	2008	2009	2010	2011	2012	2013	2014	2015	2016	2017	2018	2019
Baranya	2.952	3.375	3.264	3.924	4.764	5.232	6.640	7.884	7.954	6.683	7.181	6.309	5.671	9.392	8.922	9.242	7.737	9.863	12.307	9.909	10.363	9.972	11.128	13.079	12.767	
Bács-Kiskun	2.038	1.800	1.633	1.001	1.240	1.600	1.639	2.412	2.576	2.160	2.421	2.272	2.067	2.773	3.476	4.917	4.529	4.407	5.584	5.330	5.926	6.322	6.032	5.948	6.411	
Békés	84	88	34	155	147	202	303	261	344	358	300	281	251	399	596	679	679	877	1.115	1.108	1.116	988	1.426	1.572	1.748	
Borsod-Abaúj-Zemplén	1.859	1.365	1.369	2.284	3.210	4.694	5.267	7.531	9.019	7.355	9.239	7.888	7.024	8.455	8.599	9.227	10.808	11.697	15.605	14.741	16.527	16.040	14.166	14.961	12.627	
Csongrád	89	74	58	50	69	63	93	168	173	105	240	192	105	296	409	644	769	1.026	1.066	1.158	1.419	1.186	1.423	1.826	1.250	
Fejér	1.488	1.880	1.673	1.937	2.600	2.414	3.023	4.056	4.341	4.057	3.580	3.231	3.849	4.164	4.025	4.702	5.928	6.154	6.154	4.440	4.805	5.892	5.701	5.869	6.027	
Győr-Ménfőcsanak	1.963	2.359	2.680	2.443	2.722	3.429	3.719	5.262	5.322	4.956	5.010	4.914	4.170	6.337	6.803	7.222	8.069	7.485	8.833	6.648	7.587	7.667	8.252	9.255	9.632	
Hajdú-Bihar	242	205	129	241	384	483	496	884	1.041	839	1.143	864	530	774	1.008	1.606	1.709	2.845	3.305	3.390	3.287	3.211	3.587	3.925	3.174	
Héves	1.210	748	835	1.629	2.590	2.909	3.388	4.533	5.295	4.386	5.265	5.311	4.575	5.731	4.105	4.774	5.329	6.272	8.440	6.600	7.702	7.985	7.353	7.722	3.663	
Komárom-Esztergom	1.070	1.434	1.432	1.398	1.443	2.350	3.348	3.681	3.755	3.611	3.524	3.227	1.971	3.727	3.840	4.537	4.776	5.212	7.186	5.436	6.098	6.896	6.833	7.680	8.697	
Nógrád	1.309	987	978	1.933	2.842	3.516	4.364	6.230	7.464	6.433	6.539	5.370	3.480	5.290	3.830	5.739	6.667	8.449	11.437	7.549	9.139	10.137	8.016	8.636	7.345	
Pest	2.801	2.993	2.820	2.739	3.440	4.052	4.603	6.208	7.579	6.512	6.223	6.287	4.605	6.909	5.882	7.729	7.803	9.346	12.357	9.189	9.638	9.959	9.162	11.105	10.727	
Somogy	4.876	5.163	5.292	5.823	7.194	8.263	8.239	10.844	10.566	8.821	12.887	11.941	13.055	10.813	13.721	15.037	12.540	12.611	12.716	12.540	12.611	12.716	16.576	15.445	16.752	
Szabolcs-Szatmár-Bereg	457	533	273	415	560	764	903	1.263	1.549	1.595	1.502	1.465	960	1.446	2.421	2.766	3.310	4.370	4.757	5.458	5.353	5.075	5.264	4.693	2.176	
Jász-Nagykun-Szolnok	110	117	141	127	146	116	51	139	182	148	208	152	139	360	489	699	601	771	1.067	1.130	1.411	1.587	1.711	1.753	1.356	
Tolna	1.930	1.880	1.612	2.297	3.554	3.735	4.056	5.711	4.664	4.386	4.364	4.028	4.705	3.936	6.403	6.327	6.935	6.877	8.827	6.597	7.469	7.725	8.413	8.968	9.745	
Vas	2.243	2.215	2.492	2.596	3.490	4.187	5.160	6.441	6.546	5.657	5.088	4.679	4.114	6.143	6.706	7.891	8.651	9.040	10.886	8.648	7.631	6.808	8.295	10.941	10.454	
Veszprém	3.925	4.685	5.086	3.834	3.795	5.066	7.499	8.296	8.680	8.009	7.851	6.955	4.670	6.062	7.585	10.349	11.307	10.502	12.553	9.546	9.756	9.071	9.760	12.394	11.958	
Zala	2.805	3.088	3.252	3.300	4.283	5.348	6.055	6.431	6.997	5.411	5.972	5.592	4.179	6.930	7.508	9.279	8.503	10.175	12.701	8.948	7.987	7.864	9.983	12.307	11.535	
<b>Összesen</b>	<b>33.451</b>	<b>34.989</b>	<b>35.053</b>	<b>38.126</b>	<b>48.481</b>	<b>58.368</b>	<b>67.745</b>	<b>88.297</b>	<b>93.964</b>	<b>81.468</b>	<b>86.770</b>	<b>79.519</b>	<b>64.389</b>	<b>94.015</b>	<b>94.414</b>	<b>111.232</b>	<b>112.381</b>	<b>128.863</b>	<b>159.257</b>	<b>128.365</b>	<b>135.825</b>	<b>137.101</b>	<b>143.081</b>	<b>158.079</b>	<b>148.044</b>	

Hasznosítási arány 80.7% 88.5% 81.3% 64.7% 73.7% 85.0% 89.1% 107.1% 103.2% 94.0% 111.6% 101.8% 82.9% 115.0% 98.8% 112.0% 105.3% 121.8% 145.1% 106.8% 129.1% 129.8% 140.6% 154.1% 140.7%

















## Magyarország vadgazdálkodási tájegységei



ORSZÁGOS VADGAZDÁLKODÁSI ADATTÁR  
SZIE VADVILÁG MEGŐRZÉSI INTÉZET  
GÖDÖLLŐ 2016

Módosítva: 2016.02.24.

## Magyarország vadgazdálkodási tájai és vadgazdálkodási tájegységei

### 1. Tiszántúli vadgazdálkodási táj

- 101 Tiszazugi tájegység
- 102 Maros-Csongrádi tájegység
- 103 Békési tájegység
- 104 Szarvasi tájegység
- 105 Körös-berettyói tájegység
- 106 Nagykunsági tájegység
- 107 Hajdúsági Erdőpuszták tájegység
- 108 Hajdúsági Lőszhát-Hortobágy tájegység
- 109 Nyírségi tájegység
- 110 Felső-tiszavidéki tájegység
- 111 Tiszamenti tájegység
- 112 Sárrét-Bihari tájegység

### 2. Északi hegy- és dombvidéki vadgazdálkodási táj

- 201 Börzsöny-Gödöllői tájegység
- 202 Nógrád-Cserhádi tájegység
- 203 Bükk tájegység
- 204 Cserhát-Agteleki tájegység
- 205 Bükkalja-taktaközi tájegység
- 206 Zemplén-Bodrogközi tájegység

### 3. Duna-Tisza-közi vadgazdálkodási táj

- 301 Pesti-síksági tájegység
- 302 Észak-Bács-Kiskuni tájegység
- 303 Illancs-Bugaci tájegység
- 304 Közép-bács-kiskuni tájegység
- 305 Alsó-tiszamenti tájegység
- 306 Kiskunsági tájegység
- 307 Közép-Pesti tájegység
- 308 Tápó-vidéki tájegység
- 309 Jászsági tájegység
- 310 Mátra-alja-Dél-hevesi tájegység
- 311 Tiszatavi tájegység

### 4. Dél-dunántúli vadgazdálkodási táj

- 401 Mezőföldi tájegység
- 402 Külső-somogyi tájegység
- 403 Kapos-Tolnai tájegység
- 404 Zselic-közép-Somogyi tájegység
- 405 Belső-somogyi tájegység
- 406 Mecseki tájegység
- 407 Dél-Baranyai ártéri tájegység
- 408 Tolnai-hegyháti tájegység
- 409 Gemenci tájegység
- 410 Dél-Balaton tájegység

### 5. Észak-dunántúli vadgazdálkodási táj

- 501 Hanság-mosoni tájegység
- 502 Vas-soproni-síksági tájegység
- 503 Alpokaljai tájegység
- 504 Rába-menti-Kemenesháti tájegység
- 505 Zalai-domsági tájegység
- 506 Zala-kisbalatoni tájegység
- 507 Bakonyi tájegység
- 508 Marcal-medencei tájegység
- 509 Bakonyalja-Komáromi tájegység
- 510 Vértes-hegységi tájegység
- 511 Velencei tájegység
- 512 Dunazugi tájegység
- 513 Balaton-felvidéki tájegység